



Tavolo realizzato interamente in legno massello, con top di forma rettangolare. Gamba centrale realizzata a liste incollate e vuota all'interno, con piastra a pavimento in ferro.

COD.	DIMENSIONI	PIASTRA	A1	A2	A4
NAT-BOSSBASICRETTGS1	L.200 x P.100 x H.73,5	B2	■	■	■
		B3	■	■	■
NAT-BOSSBASICRETTGS2	L.220 x P.100 x H.73,5	B2	■	■	■
		B3	■	■	■
NAT-BOSSBASICRETTGS3	L.240 x P.110 x H.73,5	B2	■	■	■
		B3	■	■	■
NAT-BOSSBASICRETTGS4	L.260 x P.110 x H.73,5	B2	■	■	■
		B3	■	■	■

FINITURE DISPONIBILI:

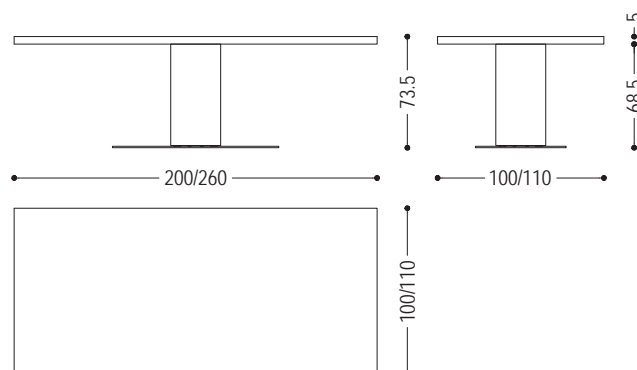
A1: noce senza nodi, noce con nodi

A2: rovere senza nodi, rovere con nodi, ciliegio

A4: rovere senza nodi pigmentato: bianco latte, total black
rovere con nodi pigmentato: bianco latte, total black

B2: ferro laccato: irondust, RAL (solo colori selezionati)

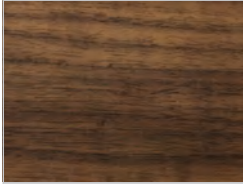
B3: ferro laccato effetto spazzolato opaco: bronzo antico, acciaio, titanio



BOSS BASIC RETTANGOLARE | FINITURE DISPONIBILI

LEGNO

A1

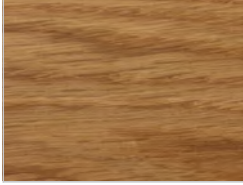


noce senza nodi



noce con nodi

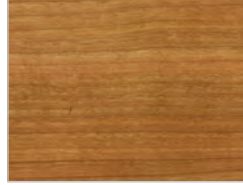
A2



rovere senza nodi



rovere con nodi

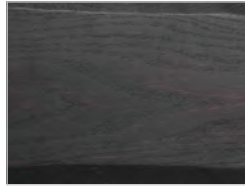


ciliegio

A4



rovere senza nodi pigmentato:
bianco latte



rovere senza nodi pigmentato:
total black



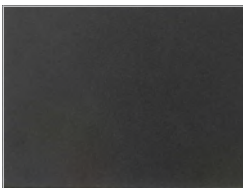
rovere con nodi pigmentato:
bianco latte



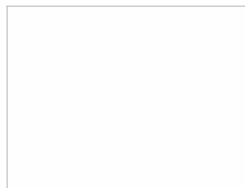
rovere con nodi pigmentato:
total black

FERRO

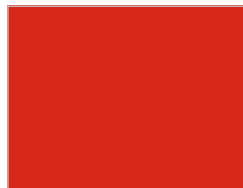
B2



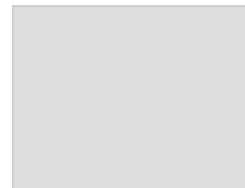
ferro laccato:
iron dust



ferro laccato:
RAL - 1013_BIANCO PERLA



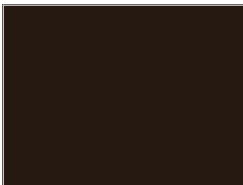
ferro laccato:
RAL - 3020_ROSSO TRAFFICO



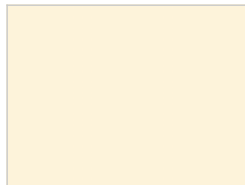
ferro laccato:
RAL - 7035_GRIGIO LUCE



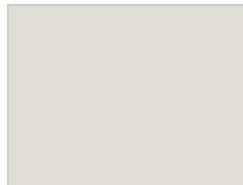
ferro laccato:
RAL - 7037_GRIGIO POLVERE



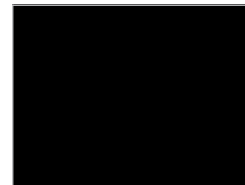
ferro laccato:
RAL - 8019_MARRONE GRIGIASTRO



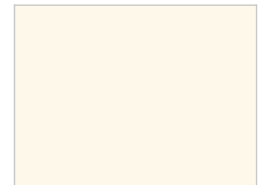
ferro laccato:
RAL - 9001_BIANCO CREMA



ferro laccato:
RAL - 9002_BIANCO GRIGIASTRO



ferro laccato:
RAL - 9005_NERO INTENSO



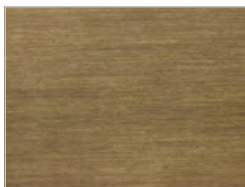
ferro laccato:
RAL - 9010_BIANCO PURO



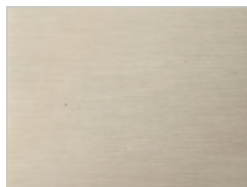
ferro laccato:
RAL - 9016_BIANCO TRAFFICO

BOSS BASIC RETTANGOLARE | FINITURE DISPONIBILI

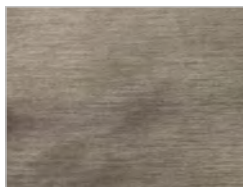
B3



ferro laccato effetto spazzolato opaco:
bronzo antico



ferro laccato effetto spazzolato opaco:
acciaio



ferro laccato effetto spazzolato opaco:
titanio